

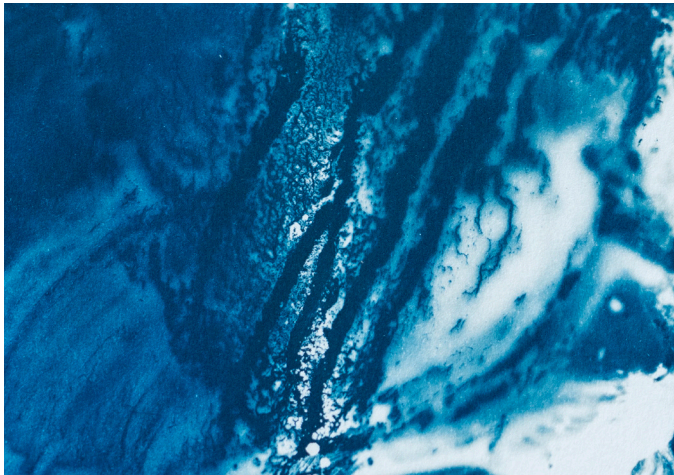
# Home Affairs

Artists: Pamela Bentley

Main Gallery - 18.01.24 - 29.02.24



Catalogue



**Detail of (Clockwise)**

- Pamela Bentley - *Motion Sickness*
- Pamela Bentley - *Here Be Dragons*
- Pamela Bentley - *Memory Land II*
- Pamela Bentley - *Tempesst*
- Pamela Bentley - *At Sea*

## ***Home Affairs***

An exhibition focusing on movement, access and migration as well as the urgent need for a tolerant Pan-African society on this continent

Exploring migration across land and sea, the show documents the movement of people through space in general - a social fabric and multi-sensory map of motion. Using the art-making process as a catalyst for dialogue and community building, Home Affairs seeks to document the relationships created through the project as both digital archive and artistic medium.

Consisting of works dedicated to the experiences of a landscape: felt and informed by how we encounter them. With paintings that flood viewers with colour and memory and draw on elemental forces of the earth and its richness, alongside the natural power of the sea and the people it has carried between continents, the Home Affairs artworks commemorate the contrasting landscapes of Pamela's personal migration from land-locked Zimbabwe to the port city of Cape Town, South Africa. Paying homage to cross-ocean voyagers, the show includes works that speak to the warnings of danger as well as the solace of safe harbour; referencing the liminal spaces and instability every migrant must find comfort amongst; speaking to the fragile nature immigrant life and an existence hanging in the balance without certainty or solid ground.



**Pamela Bentley**  
*Motion Sickness*, 2023  
Oil on Canvas  
90 x 120 cm  
R23 320 (inc VAT)



**Pamela Bentley**  
*Yearn*, 2023  
Oil on Canvas  
30 x 42 cm  
R9 010 (inc VAT)



**Pamela Bentley**

*She Grabs the Sky*, 2023

Oil on Canvas

90 x 120 cm

R23 320 (inc VAT)



**Pamela Bentley**  
*Better Views*, 2023  
Oil on Canvas  
30 x 42 cm  
R9 010 (inc VAT)



**Pamela Bentley**  
*Home. by Now, 2023*  
Oil on Canvas  
70 x 90 cm  
R25 970 (inc VAT Framed)



**Pamela Bentley**  
*Memory Land*, 2023  
Oil on Canvas  
70 x 90 cm  
R18 020 (inc VAT)





**Pamela Bentley**  
*Vein*, 2023  
Oil on Canvas  
30 x 42 cm  
R9 010 (inc VAT)



**Pamela Bentley**  
*Champagne Coast*, 2023  
Oil on Canvas  
70 x 90 cm  
R18 020 (inc VAT)



**Pamela Bentley**  
*Here be Dragons*, 2023  
Oil on Canvas  
110 x 150 cm  
R37 100 (inc VAT)



**Pamela Bentley**  
*Firebreak*, 2023  
Oil on Canvas  
70 x 90 cm  
R18 020 (inc VAT)



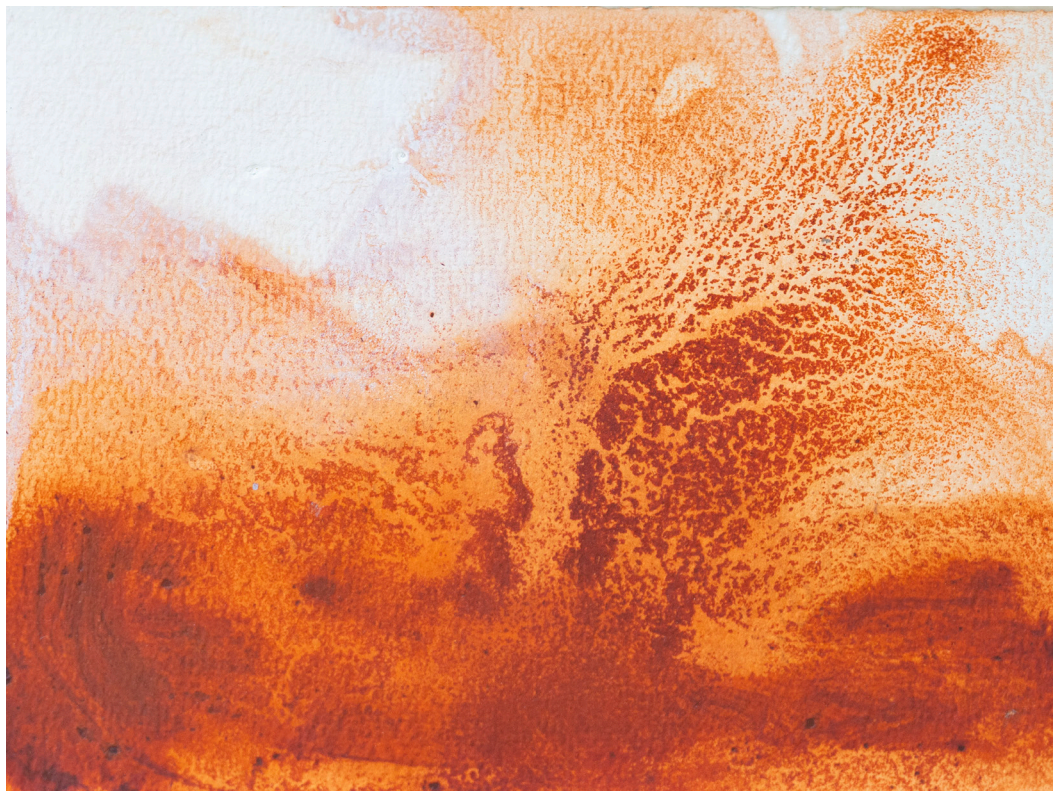
**Pamela Bentley**

*At Sea, 2023*

Oil on Paper

15 x 21 cm

R4 770 (inc VAT Framed)



**Pamela Bentley**  
*Mother Song*, 2023  
Oil on Paper  
15 x 21 cm  
R4 770 (inc VAT Framed)



**Pamela Bentley**

*Elemental*, 2023

Oil on Paper

15 x 21 cm

R4 770 (inc VAT Framed)



**Pamela Bentley**

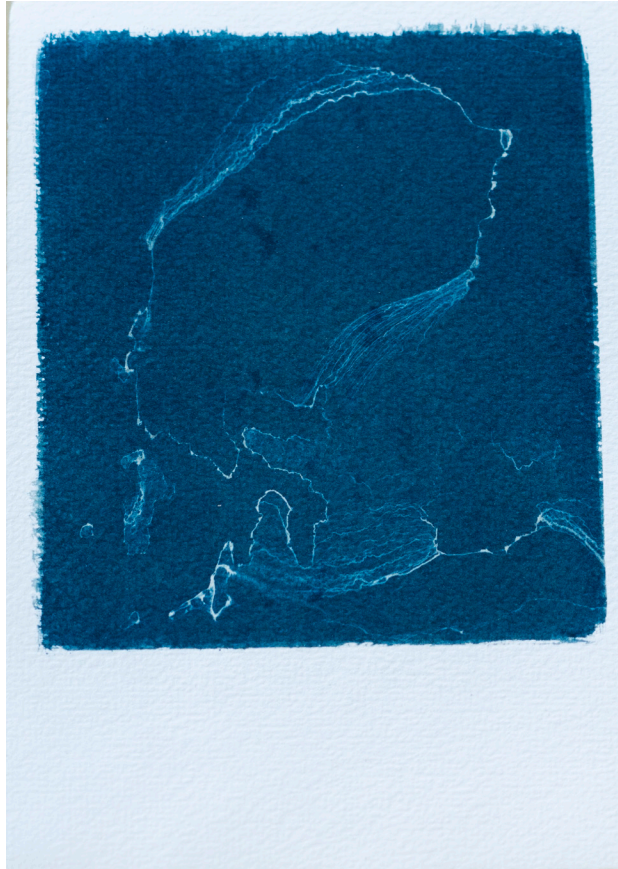
*Dry Eyes & Crying Bones* (tryptich), 2023

Cyanotype

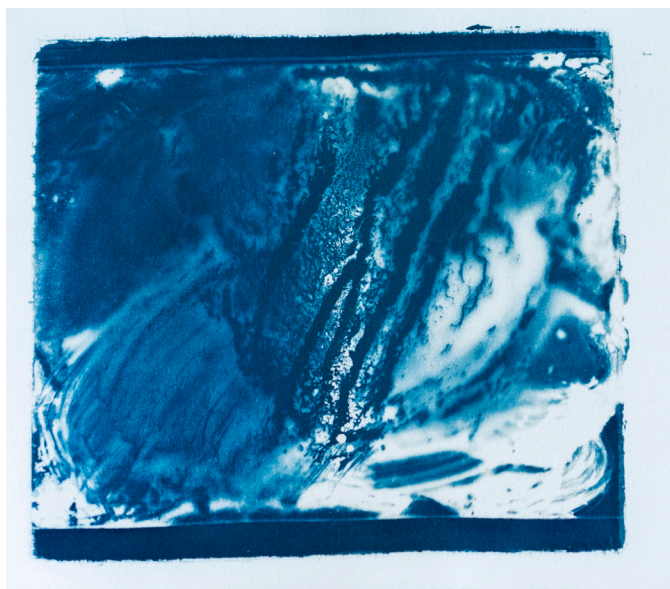
21 x 48 cm each

R12 720 (inc VAT Framed)





**Pamela Bentley**  
*Mind Travel*, 2023  
Cyanotype  
15 x 21 cm  
R4 770 (inc VAT Framed)



**Pamela Bentley**  
*Tempest*, 2021  
Cyanotype  
17.5 x 19 cm  
R4 452 (inc VAT Framed)



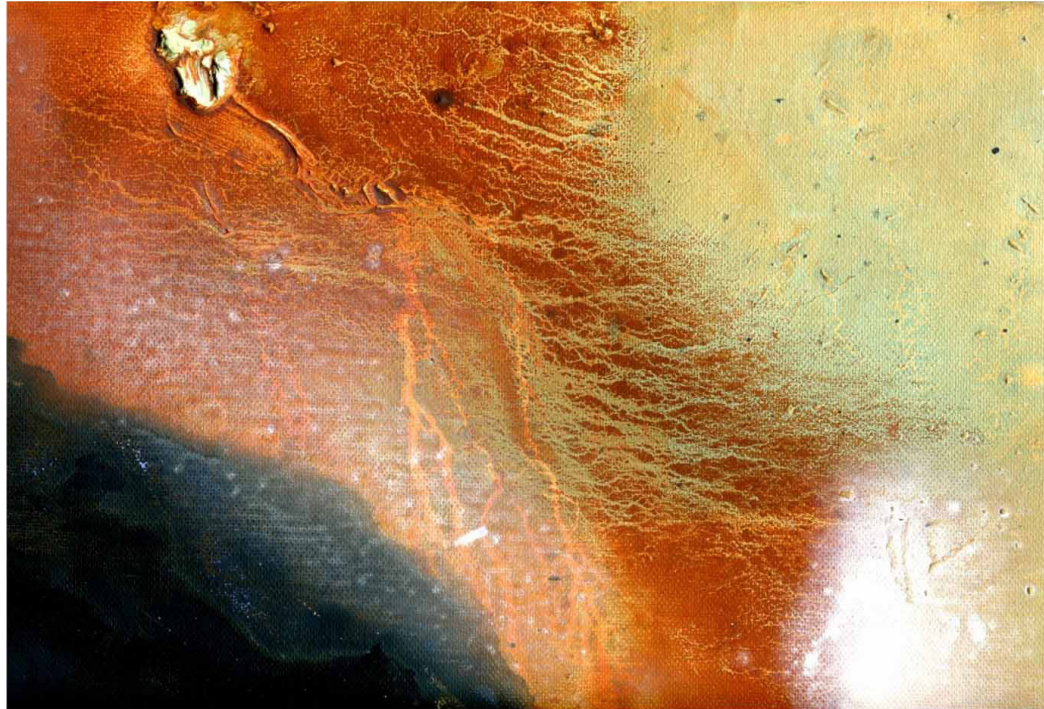
**Pamela Bentley**

*Landscape* (tryptich), 2023

Oil on Paper

21 x 48 cm each

R12 720 (inc VAT Framed)



**Pamela Bentley**

*Above*, 2023

Fine Art Giclée Print

31.5 x 44 cm

Edition of 50

R4 134 (inc VAT Unframed)

R5 724 (inc VAT Framed)



**Pamela Bentley**

*Burning Blue*, 2023

Fine Art Giclée Print

24 x 32 cm

Edition of 50

R2 650 (inc VAT Unframed)

R4 240 (inc VAT Framed)



**Pamela Bentley**  
*Holy Glimpse*, 2023  
Fine Art Giclée Print  
27.5 x 32 cm  
Edition of 50  
R2 650 (inc VAT Unframed)  
R4 240 (inc VAT Framed)



**Pamela Bentley**

*In Limbo: Life in the Balance, 2023*

Brass, Gold Thread, Kiaat

Dimensions Variable

R11 872 (inc VAT)



*Lighthouse I, 2023*

*Lighthouse II, 2023*

**Pamela Bentley**

*Lighthouse I, II, 2023*

Oil Paint on Perspex, Kiaat base with internal bulb

*Lighthouse I, 15 x 15 x 15 cm*

*Lighthouse II, 12 x 24 x 12 cm*

R13 780 (inc VAT)





Association  
*for* Visual Arts

---

[www.ava.co.za](http://www.ava.co.za)  
[admin@ava.co.za](mailto:admin@ava.co.za)  
[@avagallery.za](https://www.instagram.com/avagallery.za)

